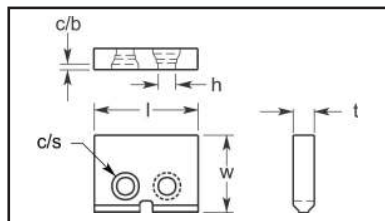


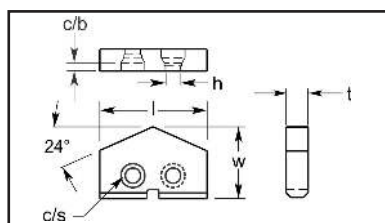
Drilling

**SPADE DRILLS
TRIGON
GUIDE PADS**

Spade Drills

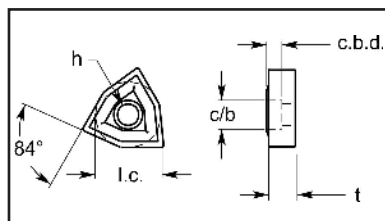


Part No.	Dimensional Specifications					
	t	w	l	h	c/s	c/b
SDB500	.1035/.1135	.390/.400	.525/.535	.084/.094	.132/.142	.022/.032



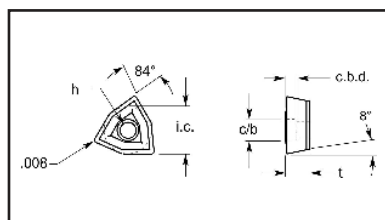
Part No.	Dimensional Specifications					
	t	w	l	h	c/s	c/b
SDB688	.135/.145	.469/.479	.705/.715	.099/.104	.152/.162	.0495/.0595
SDB938	.165/.175	.585/.595	.970/.980	.125/.135	.175/.185	.0372/.0472
SDB1.375	.197/.207	.675/.685	1.390/1.410	.164/.174	.215/.225	.0585/.0685
SDB1.875	.260/.270	.841/.851	1.890/1.910	.213/.223	.280/.290	.063/.073

Trigon Negative Chipbreaker With Hole And Counterbore



Part No.	Dimensional Specifications				
	t	i.c.	h	c/b	c.b.d.
DWG#U-4533.150T	.162/.166	.406/.414	.147/.149	.210/.214	.061
DWG#U-5026	.162/.166	.327/.333	.104/.108	.142/.146	.061
WNRX030204	.109/.113	.248/.254	.104/.108	.142/.146	.061
WNRX030304	.130/.134	.248/.254	.104/.108	.142/.146	.061
WNRX050304	.130/.134	.327/.333	.104/.108	.142/.146	.061
WNRX050404	.162/.166	.327/.333	.104/.108	.142/.146	.061
WNRX05T304	.162/.166	.327/.333	.104/.108	.142/.146	.061
WNRX060302	.109/.113	.248/.254	.103/.109	.141/.147	.058/.064
WNRX060304	.130/.134	.406/.414	.147/.151	.210/.214	.061
WNRX06T304	.162/.166	.406/.414	.147/.151	.210/.214	.061
WNRX080302	.130/.134	.327/.333	.103/.109	.141/.147	.058/.064
WNRX080402	.162/.166	.327/.333	.103/.109	.141/.147	.058/.064
WNRX100302	.130/.134	.406/.414	.146/.152	.209/.215	.058/.064
WNRX100402	.162/.166	.406/.414	.146/.152	.209/.215	.058/.064
WNRX180502	.214/.220	.707/.713	.225/.231	.292/.298	.090/.096
WNRX180602	.253/.259	.707/.713	.225/.231	.292/.298	.090/.096

Trigon Positive With Hole And Counterbore

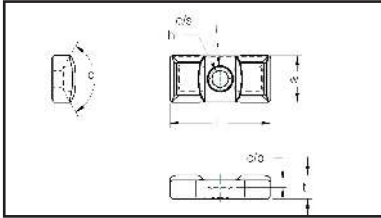


Part No.	Dimensional Specifications				
	t	i.c.	h	c/b	c.b.d.
DWG#U-5027	.202/.206	.486/.492	.193/.199	.257/.263	.069/.077
WCRX070404	.163/.167	.486/.492	.193/.199	.257/.263	.069/.077
WCRX070504	.202/.206	.486/.492	.193/.199	.257/.263	.069/.077
WCRX090404	.184/.188	.605/.611	.193/.199	.257/.263	.069/.077
WCRX120402	.163/.167	.486/.492	.193/.199	.257/.263	.070/.076
WCRX120502	.202/.206	.486/.492	.193/.199	.257/.263	.070/.076
WCRX150502	.202/.206	.605/.611	.193/.199	.257/.263	.070/.076
WCRX150602	.224/.228	.605/.611	.193/.199	.257/.263	.070/.076

Guide Pads



Solid Carbide Guide Pads



Part No.	Dimensional Specifications						
	t	w	l	h	c/s	c/b	a
UWP8	.186/.196	.330/.340	.974/.994	.130/.138	.173/.181	.045/.055	60°
UWP10	.245/.255	.409/.419	1.368/1.388	.169/.177	.232/.240	.027/.037	60°
UWP14	.307/.317	.564/.574	1.565/1.585	.216/.224	.306/.316	.056/.066	82°
UWP18	.366/.376	.728/.738	1.570/1.580	.254/.262	.370/.380	.107/.117	120°

TURNING

MILLING

GROOVING

DRILLING

THREADING

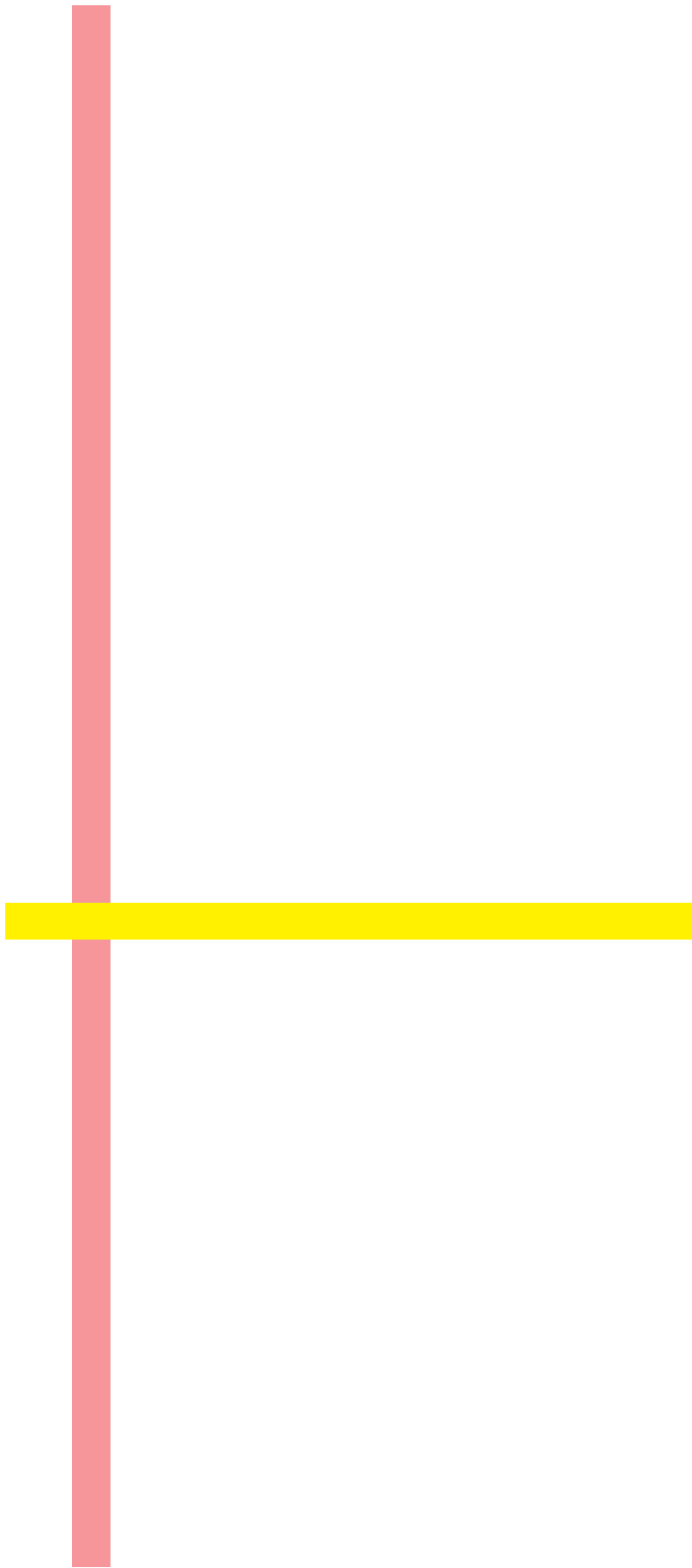
BRAZED
BLANKS

RECTANGLES
STB

WOOD
WORKING

OIL & GAS
MINING

MISC.
SHAPES



1000 Series

TURNING

MILLING

GROOVING

DRILLING

THREADING

**BRAZED
BLANKS**

**RECTANGLES
STB**

**WOOD
WORKING**

**OIL & GAS
MINING**

**MISC.
SHAPES**

TURNING

Ultra-met[®]

carbide technologies

**FABRICATOR & TOOLMAKER
Capabilities Catalog**

1000 Series

MILLING

GROOVING

DRILLING

THREADING

**BRAZED
BLANKS**

**RECTANGLES
STB**

**WOOD
WORKING**

**OIL & GAS
MINING**

**MISC.
SHAPES**

1000 Series

TURNING

MILLING

GROOVING

DRILLING

THREADING

BRAZED
BLANKS

RECTANGLES
STB

WOOD
WORKING

OIL & GAS
MINING

MISC.
SHAPES

TURNING

Ultra-met[®]

carbide technologies

**FABRICATOR & TOOLMAKER
Capabilities Catalog**

1000 Series

MILLING

GROOVING

DRILLING

THREADING

**BRAZED
BLANKS**

**RECTANGLES
STB**

**WOOD
WORKING**

**OIL & GAS
MINING**

**MISC.
SHAPES**