

Oil & Gas Mining

**CONICALS
ROUND
SERRATED BUTTON
STARS
TRAPEZOID
ROOF BITS
GEOPHYSICAL /
DRAG BIT INSERTS**

TURNING

MILLING

GROOVING

DRILLING

THREADING

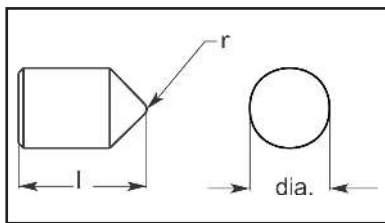
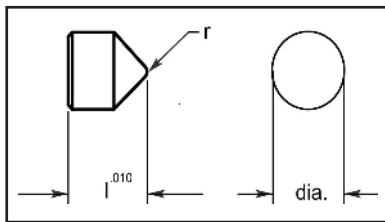
BRAZED
BLANKSRECTANGLES
STBWOOD
WORKINGOIL & GAS
MININGMISC.
SHAPESUltra-met[®]

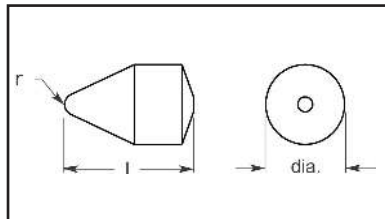
carbide technologies

FABRICATOR & TOOLMAKER
Capabilities Catalog

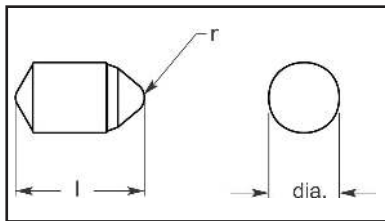
Conicals

Cone Point

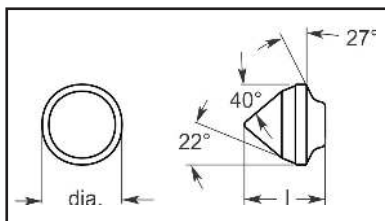


Cone Point


Double Cone Point



Capped Valve Seat



Part No.	Dimensional Specifications		
	dia.	l	r
CP1-90-1.125LG	1.015/1.020	1.115/1.135	3/32
CP1-90-1.250LG	1.015/1.020	1.240/1.260	3/32

Part No.	Dimensional Specifications		
	dia.	l	r
CP308-90.636LG	.305/.310	.626/.646	.035/.045
CP308-90.698LG	.305/.310	.688/.708	.035/.045
CP317-70.655LG	.314/.320	.645/.665	.031/.041
CP352-90.611LG	.348/.355	.601/.621	.031/.041
CP352-90.673LG	.348/.355	.663/.683	.031/.041
CP755-75-1.000LG	.752/.758	.980/1.020	.090/.100
CP1018-90-1.125LG	1.015/1.020	1.105/1.145	.090/.100
CP1018-90-1.250LG	1.015/1.020	1.230/1.270	.090/.100

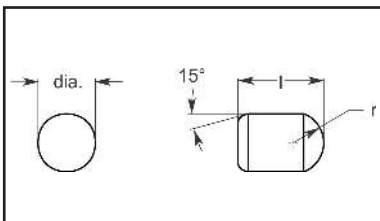
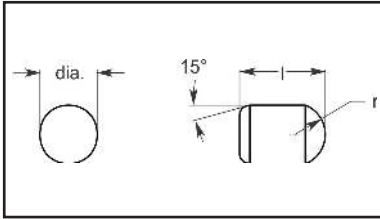
Part No.	Dimensional Specifications		
	dia.	l	r
CP265-50.434LG	.262/.268	.429/.439	.031/.041

Part No.	Dimensional Specifications		
	dia.	l	r
DCP352-80.639LG	.348/.355	.629/.649	.073/.083
DCP478-90.792LG	.475/.481	.782/.802	.120/.130

Part No.	Dimensional Specifications	
	dia.	l
CVS.646DIAX.651LG	.639/.653	.646/.656

Conicals

Compact



Part No.	Dimensional Specifications		
	dia.	l	r
COM375X560LG	.375	.560	.203
COM438X650LG	.4375	.650	.234
COM500X747LG	.500	.747	.266
COM563X1.008LG	.5625	1.008	.297
COM625X937LG	.625	.937	.327
COM625X1.383LG	.625	1.383	.327
COM750X1.125LG	.750	1.125	.390

Part No.	Dimensional Specifications	
	dia.	l
500DIA-COM.725L	.515/.525	.715/.735
500DIA-COM.748L	.504/.514	.743/.753

TURNING

MILLING

GROOVING

DRILLING

THREADING

BRAZED
BLANKS

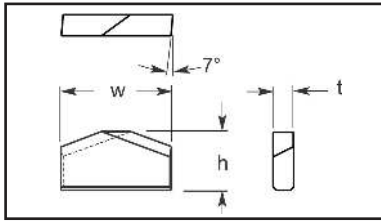
RECTANGLES
STB

WOOD
WORKING

OIL & GAS
MINING

MISC.
SHAPES

Roof Bits

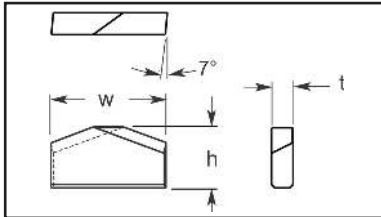


include $\chi = 140^\circ$

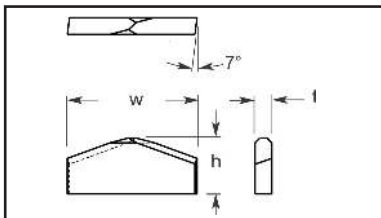
Part No.	Dimensional Specifications		
	w	h	t
RD1-.400H	1	.400	.175/.185
RD1-.400H.250THK	1	.400	.245/.255
RD1-.425H	1	.425	.175/.185
RD1-.450H	1	.450	.175/.185
RD1-.450H.195THK	1	.450	.190/.200
RD1-.475H	1	.475	.175/.185
RD1-.485H	1.010/1.030	.480/.490	.175/.185
RD1-.490H	1.010/1.030	.490/.510	.175/.185
RD1-.495H	1.010/1.030	.490/.500	.175/.185
RD1-.500H	1	.500	.175/.185
RD1-.500H.195THK	1	.500	.190/.200
RD1-.500H.250THK	1	.500	.245/.255
RD1-.510H	1.010/1.030	.505/.515	.175/.185
RD1-.520H	1	.520	.175/.185
RD1-.550H	1.010/1.030	.545/.555	.175/.185
RD1-1/32.400H	1 3/8	.550	.175/.185
RD1-1/32.425H	1 3/8	.600	.175/.185
RD1-1/32.450H	1 3/8	.650	.175/.185
RD1-1/32.475H	1 3/8	.700	.175/.185
RD1-1/32.500H	1 3/8	.725	.175/.185
RD1-1/32.520H	1.042/1.062	.515/.525	.175/.185
RD1-3/8.1.01H	1.385/1.405	.995/1.025	.175/.185
RD1-3/8.500H	1 3/8	.750	.175/.185
RD1-3/8.530H	1.385/1.405	.520/.540	.175/.185
RD1-3/8.550H	1 1/2	.500	.175/.185
RD1-3/8.562H	1.385/1.405	.562/.582	.175/.185
RD1-3/8.600H	1 1/2	.550	.175/.185
RD1-3/8.600H205T	1.385/1.405	.595/.605	.200/.210
RD1-3/8.625H205T	1.385/1.405	.620/.630	.200/.210
RD1-3/8.635H	1.385/1.405	.635/.655	.175/.185
RD1-3/8.645H205T	1.385/1.405	.640/.650	.200/.210
RD1-3/8.650H	1 1/2	.600	.175/.185
RD1-3/8.650H205T	1.385/1.405	.645/.655	.200/.210
RD1-3/8.655H	1.385/1.405	.650/.660	.175/.185
RD1-3/8.665H	1.385/1.405	.660/.670	.175/.185
RD1-3/8.670H	1.385/1.405	.660/.680	.175/.185
RD1-3/8.680H205T	1.385/1.405	.675/.685	.200/.210
RD1-3/8.700H	1 1/2	.650	.175/.185
RD1-3/8.715H	1.385/1.405	.710/.720	.175/.185
RD1-3/8.725H	1 1/2	.700	.175/.185
RD1-3/8.750H	1 1/2	.750	.175/.185
RD1-3/8.770H	1.635/1.655	.760/.780	.175/.185
RD1-1/2.500H	1 1/32	.400	.175/.185
RD1-1/2.530H	1.500/1.530	.520/.540	.175/.185
RD1-1/2.550H	1 1/32	.425	.175/.185
RD1-1/2.600H	1 1/32	.450	.175/.185
RD1-1/2.635H	1.500/1.530	.630/.640	.175/.185
RD1-1/2.650H	1 1/32	.475	.175/.185
RD1-1/2.655H	1.500/1.530	.650/.660	.175/.185
RD1-1/2.665H	1.500/1.530	.660/.670	.175/.185
RD1-1/2.700H	1 1/32	.500	.175/.185
RD1-1/2.750H	1 3/8	.500	.175/.185
RD1-5/8.700H	1.635/1.655	.690/.710	.175/.185
RD1-5/8.710H	1.635/1.655	.695/.725	.175/.185
RD1-5/8.760H	1.635/1.655	.745/.775	.175/.185
RD1-5/8.780H	1.635/1.655	.765/.795	.175/.185
RD1-7/8.700H	1 7/8	.700	.175/.185

Roof Bits

Roof Bits



include $\angle = 140^\circ$

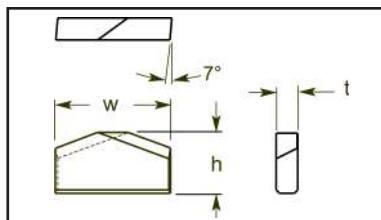


include $\angle = 140^\circ$

Part No.	Dimensional Specifications		
	w	h	t
RD1-.450H.195THK	1	.450	.190/.200
RD1-.500H.195THK	1	.500	.190/.200
RD1-.400H.250THK	1	.400	.245/.255
RD1-.500H.250THK	1	.500	.245/.255

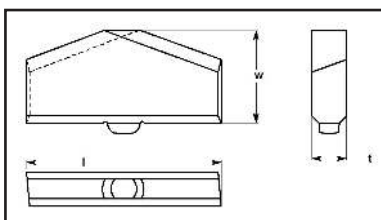
Part No.	Dimensional Specifications		
	w	h	t
RD1-3/8.600H-BP	1 3/8	.600	.175/.185
RD1-.500H-DA	1	.500	.175/.185
RD1-.520H-HIGH ATTACK	1	.520	.175/.185
RD1-.400H.250THK-MOD	1	.400	.245/.255
RD1-.500H-MOD	1	.500	.175/.185
RD1-1/32.400H.250THK-MOD	1 1/32	.400	.245/.255
RD1-.400H.250THK-SAN	1	.400	.245/.255
RD1-1/32.400H.250THK-SAN	1 1/32	.400	.245/.255
RD1-.475H-BH	1	.475	.175/.185
RD1-.500H-BH	1	.500	.175/.185
RD1-3/8.600H-BH	1 3/8	.600	.175/.185
RD1-3/8.700H-BH	1 3/8	.700	.175/.185
RD1-3/8.725H-BH	1 3/8	.725	.175/.185
RD1-3/8.750H-BH	1 3/8	.750	.175/.185

NEW Roof Bits



Part No.	Dimensional Specifications		
	w	h	t
RD1-.450H-RP	1.015/1.030	.445/.460	.183/.188
RD1-.500H-RP	1.015/1.030	.495/.510	.183/.188

NEW Roof Bits



Part No.	Dimensional Specifications		
	w	h	t
RD1-.500H-SP	1.010/1.030	.495/.505	.175/.185

TURNING

MILLING

GROOVING

DRILLING

THREADING

BRAZED
BLANKSRECTANGLES
STBWOOD
WORKINGOIL & GAS
MININGMISC.
SHAPESUltra-met[®]

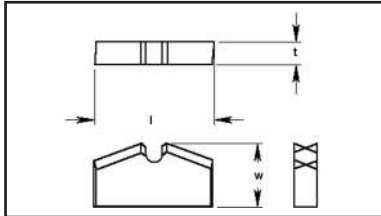
carbide technologies

FABRICATOR & TOOLMAKER
Capabilities Catalog

Roof Bits

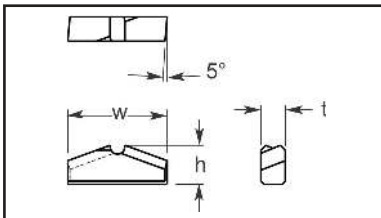


Roof Bits



Part No.	Dimensional Specifications		
	w	h	t
RD1-.450H-PILOT	1.010/1.030	.445/.455	.175/.185
RD1-.475H-PILOT	1.010/1.030	.470/.480	.175/.185
RD1-.500H-PILOT	1.010/1.030	.495/.505	.175/.185
RD1-1/32.500H-PILOT	1.042/1.062	.495/.505	.175/.185

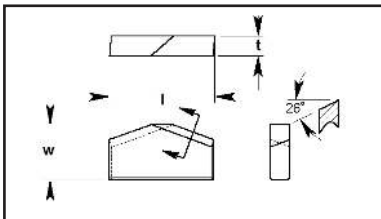
Roof Bits



Part No.	Dimensional Specifications		
	w	h	t
RD1-40H25TSAN-26	1.010/1.030	.395/.405	.245/.255
RD1-500H25T-SAN	1.010/1.030	.495/.505	.245/.255
RD1.400H.25T-HT	1.015/1.030	.395/.405	.245/.255
RD1-485H.25T-SAN	1.010/1.030	.480/.490	.245/.255
RD1-1/32-4H.25SA	1.042/1.062	.395/.405	.245/.255



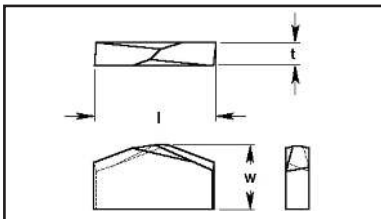
Roof Bits



Part No.	Dimensional Specifications		
	w	h	t
RD1-.510H-26°	1.020/1.030	.505/.515	.175/.185
RD1-.520H-26°	1.020/1.030	.510/.520	.175/.185



Roof Bits

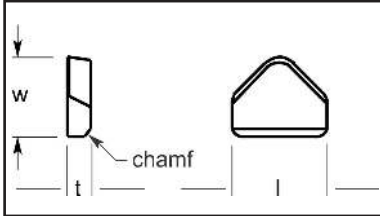


Part No.	Dimensional Specifications		
	w	h	t
RD1-450H.195T-MOD	1.010/1.030	.440/.460	.190/.200
RD1-485H.25T-MOD	1.015/1.030	.480/.490	.245/.255
RD1-.500H.195THK-MOD	1.010/1.030	.495/.505	.190/.200

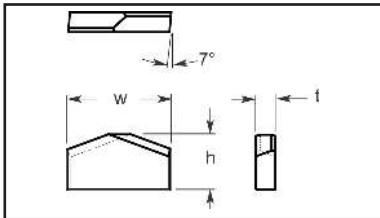
Roof Bits



Roof Bits

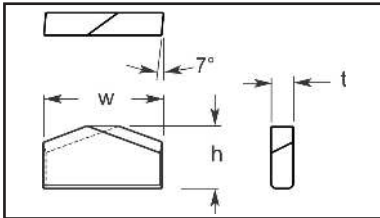


Part No.	Dimensional Specifications			
	t	w	l	chamf
SK#9309	.308/.318	1.045/1.059	1.240/1.260	.093 X 45°



Part No.	Dimensional Specifications		
	w	h	t
DWG#FS2900	1.500/1.525	.745/.775	.205/.215

include $\angle = 140^\circ$



Part No.	Dimensional Specifications		
	w	h	t
DWG138-700D	1.380/1.400	.692/.708	.179/.185

include $\angle = 140^\circ$

TURNING

MILLING

GROOVING

DRILLING

THREADING

BRAZED
BLANKS

RECTANGLES
STB

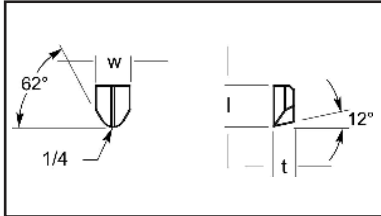
WOOD
WORKING

OIL & GAS
MINING

MISC.
SHAPES

Wall Auger Bit

Wall Auger Bit Vee Bottom

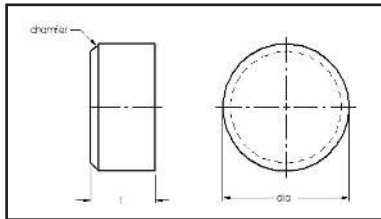


Part No.	Dimensional Specifications		
	t	w	l
DWG#U-5371	.430/.440	.745/.755	.895/.905
DWG#U-5371-.800LG	.430/.440	.745/.755	.795/.805
DWG#U5371-.825LG	.430/.440	.745/.755	.820/.830
DWG#U-5371-.835LG	.430/.440	.745/.755	.830/.840
U-6643-1.250LG	.430/.440	.745/.755	1.240/1.260

Rounds



Round Wear Buttons

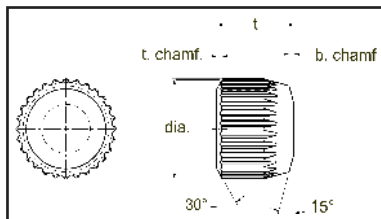


Part No.	Dimensional Specifications		
	t	dia.	chamf
368DX187T	.185/.189	.366/.370	.022 X 45°
368DX200T	.195/.205	.360/.370	.015/ X 45°

Serrated Button



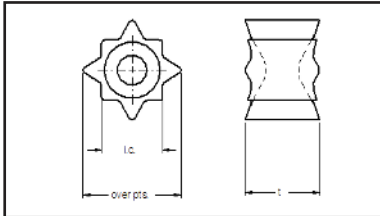
Serrated Button



Part No.	Dimensional Specifications			
	t	dia.	t. chamf	b. chamf
SRB2.5-200	.195/.205	.329/.339	.012 X 40°	.018 X 15°
SRB34	.245/.255	.3995/.4065	.020 X 30°	.020 X 15°
SRB35	.307/.317	.3995/.4065	.020 X 30°	.020 X 15°
SRB36	.370/.380	.3995/.4065	.020 X 30°	.020 X 15°
SRB5.54	.245/.255	.583/.593	.012 X 40°	.033 X 15°
SRB5.55	.3075/.3175	.583/.593	.012 X 40°	.033 X 15°
SRB5.56	.370/.380	.583/.593	.012 X 40°	.033 X 15°
SRB5.58	.495/.505	.583/.593	.012 X 40°	.033 X 15°

Stars

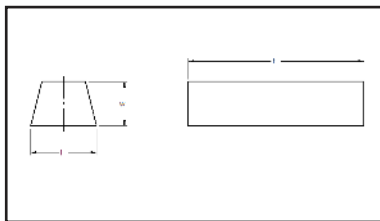
NEW Stars



	Dimensional Specifications		
	i.c.	t	over pts.
188STAR	.143/.163	.178/.198	.239/.259
250STAR	.200/.220	.240/.260	.334/.354
312STAR	.241/.261	.302/.312	.413/.433
375STAR	.300/.320	.365/.385	.508/.528

Trapezoid

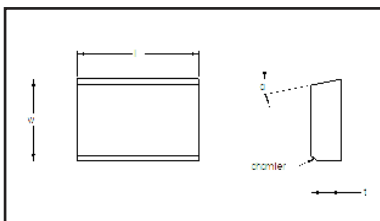
NEW Trapezoid



Part No.	Dimensional Specifications		
	t	w	l
TRAP375X250X1	.990/1.010	.245/.255	.370/.380

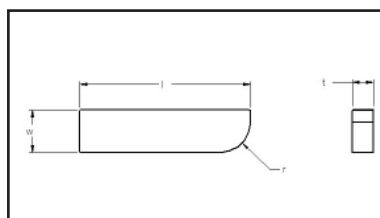
Geophysical / Drag Bit Inserts

NEW Gage Block With Angle



Part No.	Dimensional Specifications				
	t	w	l	a	chamf
1114	.495/.505	.184/.192	.740/.760	10°/12°	.030 X 45°
1115	.370/.380	.183/.193	.615/.635	11°/13°	none

NEW Gage Block With Radius



Part No.	Dimensional Specifications			
	t	w	l	r
1105-DB	.121/.129	.245/.255	.990/1.010	.170/.180

TURNING

Ultra-met[®]

carbide technologies

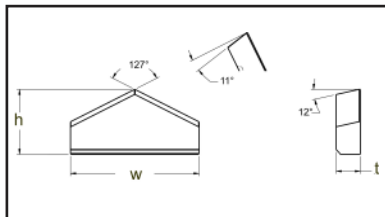
FABRICATOR & TOOLMAKER
Capabilities Catalog

Geophysical / Drag Bit Inserts

MILLING



Symmetrical Apex



Part No.	Dimensional Specifications		
	w	h	t
1117	0.990/1.010	.495/.505	.184/.192
4011	1.115/1.135	.740/.760	.184/.192

GROOVING

DRILLING

THREADING

BRAZED
BLANKSRECTANGLES
STBWOOD
WORKINGOIL & GAS
MININGMISC.
SHAPES

1000 Series

TURNING

MILLING

GROOVING

DRILLING

THREADING

BRAZED
BLANKS

RECTANGLES
STB

WOOD
WORKING

OIL & GAS
MINING

MISC.
SHAPES

TURNING

Ultra-met[®]

carbide technologies

**FABRICATOR & TOOLMAKER
Capabilities Catalog**

1000 Series

MILLING

GROOVING

DRILLING

THREADING

**BRAZED
BLANKS**

**RECTANGLES
STB**

**WOOD
WORKING**

**OIL & GAS
MINING**

**MISC.
SHAPES**

1000 Series

TURNING

MILLING

GROOVING

DRILLING

THREADING

BRAZED
BLANKS

RECTANGLES
STB

WOOD
WORKING

OIL & GAS
MINING

MISC.
SHAPES

TURNING

Ultra-met®

carbide technologies

**FABRICATOR & TOOLMAKER
Capabilities Catalog**

1000 Series

MILLING

GROOVING

DRILLING

THREADING

**BRAZED
BLANKS**

**RECTANGLES
STB**

**WOOD
WORKING**

**OIL & GAS
MINING**

**MISC.
SHAPES**

1000 Series

TURNING

MILLING

GROOVING

DRILLING

THREADING

BRAZED
BLANKS

RECTANGLES
STB

WOOD
WORKING

OIL & GAS
MINING

MISC.
SHAPES

TURNING



1000 Series

MILLING

GROOVING

DRILLING

THREADING

**BRAZED
BLANKS**

**RECTANGLES
STB**

**WOOD
WORKING**

**OIL & GAS
MINING**

**MISC.
SHAPES**

1000 Series

TURNING

MILLING

GROOVING

DRILLING

THREADING

**BRAZED
BLANKS**

**RECTANGLES
STB**

**WOOD
WORKING**

**OIL & GAS
MINING**

**MISC.
SHAPES**

TURNING

MILLING

GROOVING

DRILLING

THREADING

BRAZED
BLANKS

RECTANGLES
STB

WOOD
WORKING

OIL & GAS
MINING

MISC.
SHAPES

1000 Series

TURNING

MILLING

GROOVING

DRILLING

THREADING

BRAZED
BLANKS

RECTANGLES
STB

WOOD
WORKING

OIL & GAS
MINING

MISC.
SHAPES

TURNING

MILLING

GROOVING

DRILLING

THREADING

BRAZED
BLANKS

RECTANGLES
STB

WOOD
WORKING

OIL & GAS
MINING

MISC.
SHAPES